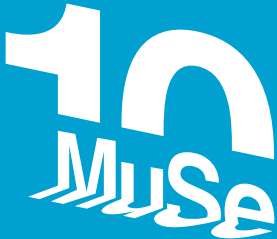
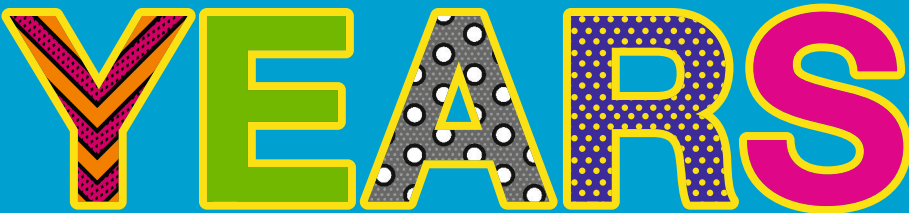
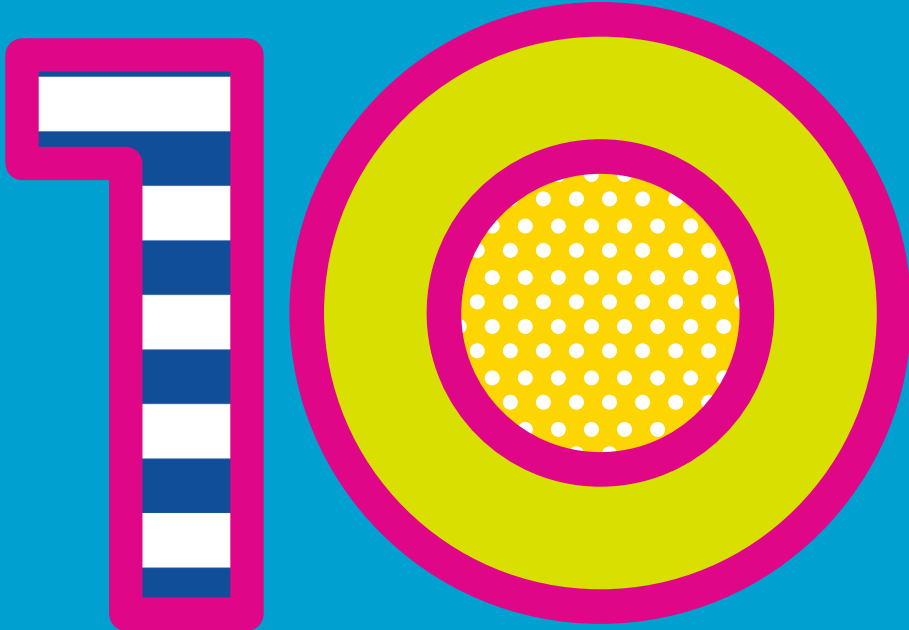


Mission report
in a nutshell

—
2023



© 2024 MUSE - Science Museum
Corso del Lavoro e della Scienza, 3
Trento

MUSE President

Stefano Zecchi
(until 9 May 2024)
Stefano Bruno Galli
(from 10 May 2024)

MUSE Chief Executive Officer

Michele Lanzinger
(until 1 March 2024)
Massimo Eder
(from 1 April 2024)

Chief Editor

Alberta Giovannini

Editorial Committee

Alberta Giovannini
Sabrina Candioli
Antonia Caola
Anna Redaelli

Curated by MUSE Staff

Photos

Giulia Curti
Matteo De Stefano
Michele Purin

Graphic Design

Comunicazione Design srl - Trento

Printing

Tipografia Esperia, Lavis (TN)

ISBN

978-88-531-0085-6

MUSE identity

VISION

We investigate nature, share science and inspire society for sustainable development.

MISSION

To interpret nature, starting with the mountain landscape, using the eyes, tools and questions of scientific research, picking up contemporary challenges and enjoying the pleasure of knowledge, to lend value to discovery, innovation, and sustainability.

GUIDING PRINCIPLES

Diversity, collaboration, creativity, passion, responsibility and open dialogue are the values that shape MUSE's actions, which are characterized by curiosity, fascination, and enjoyment that benefit anyone's well-being.



About us

286

People worked at MUSE and in its Museum network
(for at least 3 months)

Worked with us

16

young people on civil service

60%



40%



24

interns

43

years

average age

121

students in work experience
(ASL - Alternanza Scuola Lavoro)

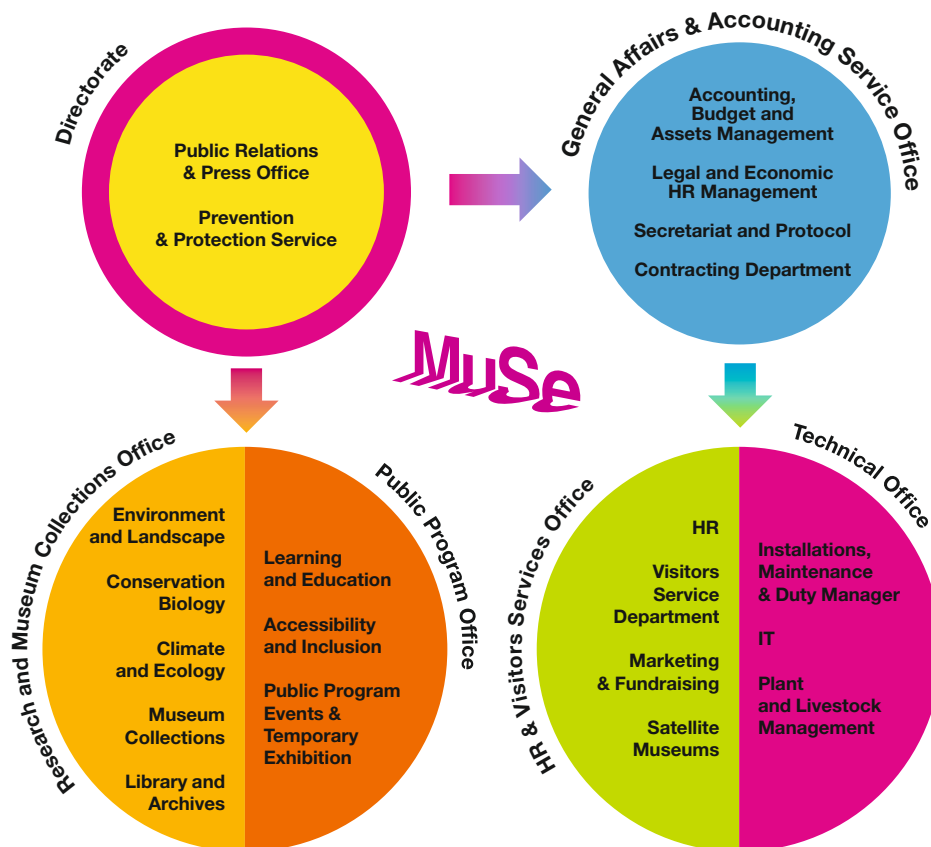
140

volunteers

49 for public events and activities

91 for research and other departments

Organization chart



Stakeholder map

Museum Staff

Public Administration

Civil society/Communities

Civil Authorities

Other Museums

Scientific Community

Universities



Research Centers

Educational and Learning Institutes

Suppliers

Tourist Offices

Cultural and Creative Industries

Media

The museum network

MUSE is a network of scientific museums spread across the Trentino region. The head office in Trento city is the central hub that manages all the sites listed hereinafter:

MUSE



Palazzo delle Albere



Museo Geologico delle Dolomiti di Predazzo



Giardino Botanico Alpino Viote Monte Bondone



Terrazza delle Stelle Viote, Monte Bondone

ReLed Network



Museo delle Palafitte del Lago di Ledro

Bezzecca Garibaldi and Great War Museum

Foletto Pharmaceutical Laboratory Museum in Pieve

Bezzecca Ossuary Hill of Santo Stefano

Broche forge in Prè

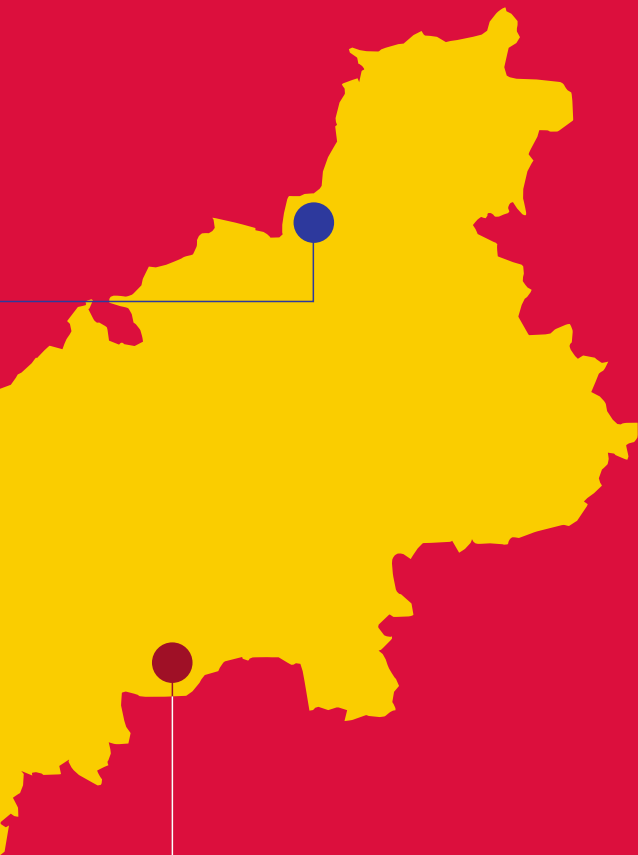
Bondone San Giovanni Castle

Ledro Land Art

Casèt Bird Ringing Station

Lake Ampola Visitor Center

Tremalzo Flora and Fauna Visitor Center



**Affiliated sites own
by local administration**

Arco
Arboretum

Marcesina
Prehistory Center

African site



**Centro di
Monitoraggio Ecologico**
Monti Udzungwa, Tanzania

MUSE In continuous evolution



MUSE Opening

July 27th

Maxi Ooh! Opening

July 19th

Ecsite Annual Conference

“Food for
curious minds”

June 9th – 13th



Renovation of the exhibition hall of Predazzo Geological Museum of the Dolomites

August 19th

LIFE Franca

Launch of the European
project on Flood
Risk Anticipation

November 24th

“Wolves in the city”

Call for artists for the
LIFE WOLF ALPS
European project

August 22nd

2013

2014

2015

2016

2017

★ **Federculture
Award**
Culture
Management
2014

★ **EMYA
Special
commendation**

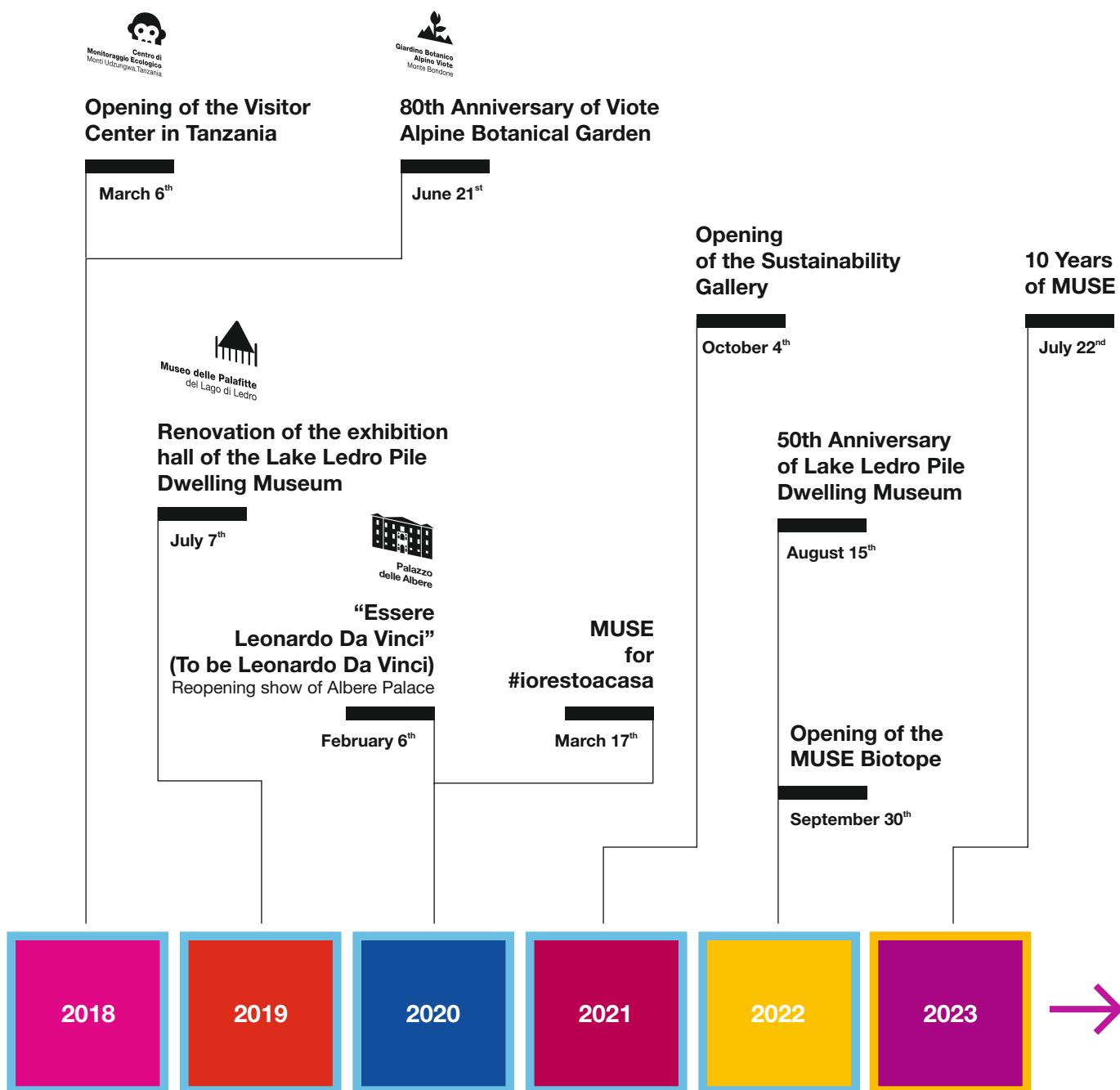
★ **Trentino
eco-restoration
Certification
for MUSE Café**

★ **LEED GOLD
Certification**
Leadership in Energy
and Environmental Design
(first Italian museum ever)

★ **Family Audit
Executive
Certification**

★ **Luigi Micheletti
Prize**





Opening of the Visitor Center in Tanzania

March 6th



80th Anniversary of Viote Alpine Botanical Garden

June 21st



Renovation of the exhibition hall of the Lake Ledro Pile Dwelling Museum



July 7th

"Essere Leonardo Da Vinci" (To be Leonardo Da Vinci)
Reopening show of Albere Palace



February 6th

MUSE for #iorestoacasa

March 17th

Opening of the Sustainability Gallery

October 4th

50th Anniversary of Lake Ledro Pile Dwelling Museum

August 15th

Opening of the MUSE Biotope

September 30th

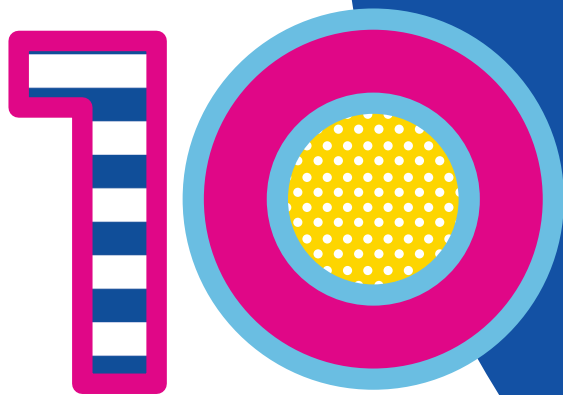
10 Years of MUSE

July 22nd



10 Years of MUSE

From July 2013
to July 2023



Visitors and activities

4.660.000

Visitors
(71% from out of Province, 20% schools)

900.000

People taking part in educational activities

44.500

School groups

200

Educational activities and workshops every year

135

Temporary exhibitions

1.545

Public events

12

Awards, certifications
and acknowledgements

10th year attendance

200

Institutions, enterprises and foundations engaged in partnerships

50

Loyal corporate supporters (yearly average)

40

New Supporters who joined MUSE10 corporate membership campaign

MyMUSE Membership (from October 2022 to July 2023):

1.685

Teachers&Educators Card

480

Cards dedicated to families, young people and science addicted for a total of more than

2.000

People involved

Research

336

Collections

5.067.500

Individual specimens

858

Scientific papers

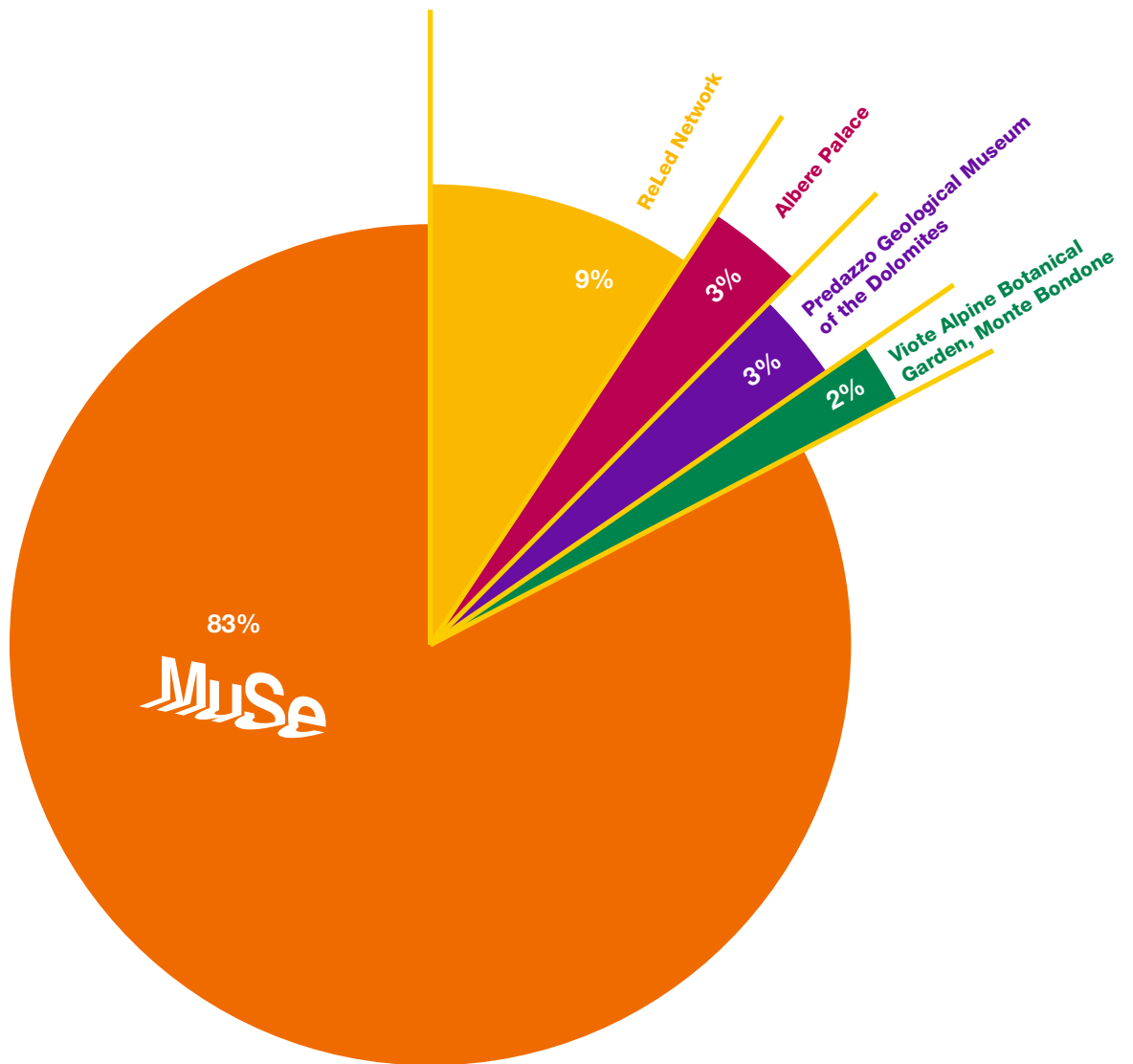
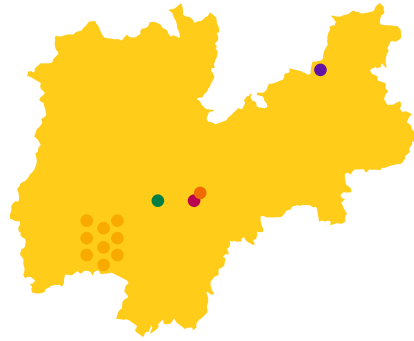
+100.000

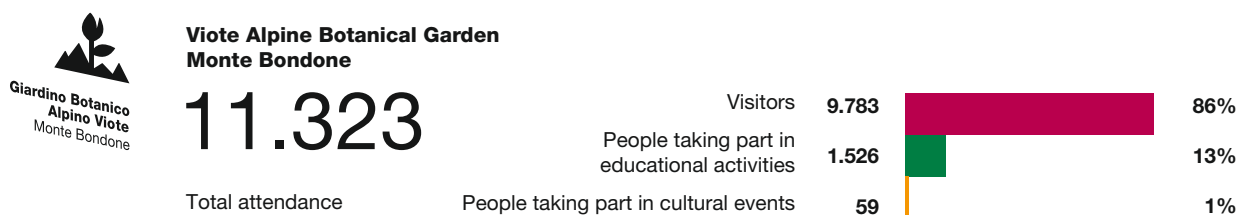
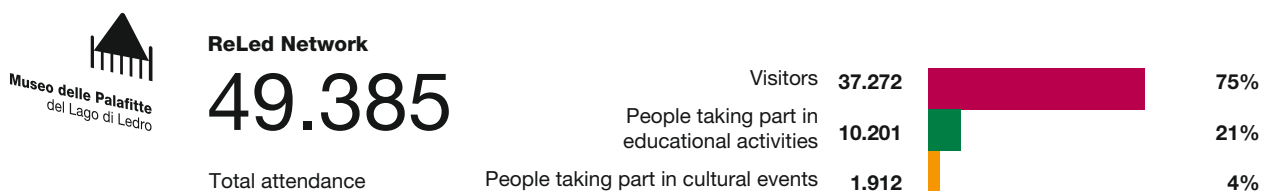
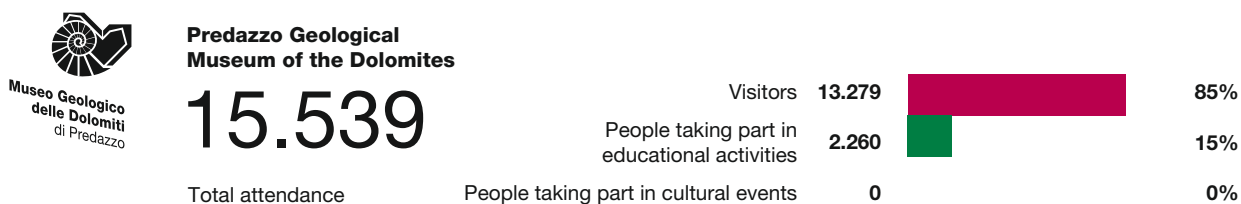
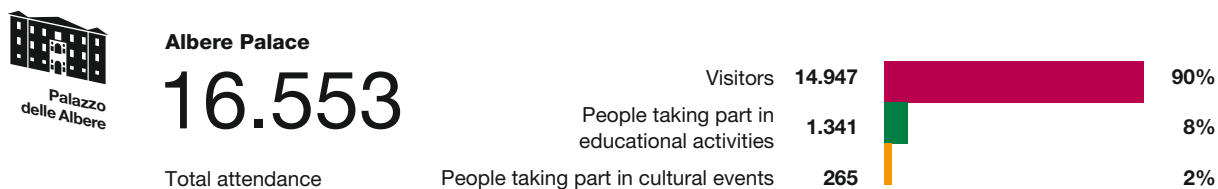
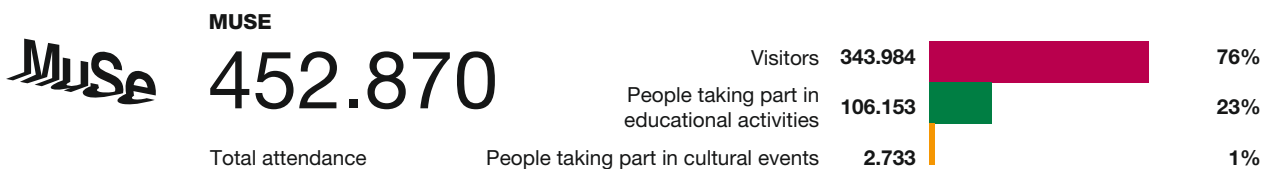
Books in the Gino Tomasi Library

Our audience

545.670

Total attendance of the network





Economic sustainability

46%

Funded

Funded by the local Trento
Autonomous Province government

54%

Auto-funded by

7% scientific projects and consultations

17% admission tickets

7% educational activities

6% MUSE Shop

2% rentals and royalties

4% other income

2% sponsorships

3% grants and contributions

6% surplus from the previous year

Direct impact

7.200.000 Euro

The amount that MUSE has returned to the local economy by creating jobs and by benefiting from the services provided by many local economic operators.

Fiscal impact

8.700.000 Euro

The amount that MUSE has returned to the local economy, in terms of direct and indirect fiscal impact.

More than 900

Suppliers contracted by MUSE to purchase goods, services and supplies, thus contributing to the employment activation as well as to the local economy.



Research

MUSE is a research centre primarily dedicated to the study of mountain systems. The activities focus on three areas: Climate and Ecology, Environment and Landscape, Conservation Biology. A team of more than 40 researchers studies and manages our natural and archaeological collections and carries out field and laboratory research, collaborating with the different stakeholders to highlight the natural and cultural heritage and to identify the best management strategies.

32

ISI Scientific Papers

127

Collaborations, including 30 internationals

37

Scientific papers in non-ISI and educational magazines

17

Dissertations, internships, and doctorates

10

Books and book chapters

145

Scientific outreach activities: events, conferences for the general public

15

Reports

112

Interviews (radio, tv, print)

51

Conference reports

5.608.500

Individual specimens



Communication

124

Press releases

20.321

Views of the special 10-year anniversary web page

3.832

Articles in local, national online and paper press

+7%

Follower compared to 2022

377

Mentions on TV and radio

Events

74

Cultural events

27

Corporate events

44

Social events



Exhibition projects



Inside colour. Through matter and light

November 26th 2022

June 4th 2023



Wild City. Stories of urban nature



Lascaux Experience.
The cave of lost stories

April 1st 2023



A.A.A. - Lavazza

May 20th 2023
June 25th 2023

July 24th 2022

February 12th 2023

July 22nd 2023

2022

2023

October	November	December	January	February	March	April	May	June	July
---------	----------	----------	---------	----------	-------	-------	-----	------	------

December 2nd 2022
January 9th 2023

STEP Dolomites UNESCO



November 30th 2022
January 8th 2023

Bioart.
Biology frontiers
and artistic imagery



November 5th 2022

May 28th 2023

June 16th 2023

Desert Italy



Inside the mind of the wolf





**Dubai Climate Conference.
Cop28**

November 20th 2023 March 3rd 2024



Palazzo
delle Albero

Looking for a hearth

December 16th 2023
February 11th 2024



Shamans. Communicating the invisible

December 16th 2023



Palazzo
delle Albero

July 28th
2024



2023

2024

August September October November December January February March April May June

August 20th 2023

September 1st 2023
October 2nd 2023

**Bee-friendly
city**



July 13th 2023
September 24th 2023

**Anima Mundi.
The carousel of lif**



Palazzo
delle Albero

December 6th 2023

June 16th 2024

Quantum. The revolution in one leap



December 3rd 2023
December 15th 2023

**Books
for all**





Plan for the elimination of architectural barriers (P.E.B.A)

PEBA is a strategic plan to promote full accessibility to spaces, cultural experience, to benefit social integration and the quality of life.

MUSE led this journey in partnership with the local stakeholders, all the museum staff included.





A Museum friendly to Children and Teens

In May 2019 MUSE was the first Italian museum to be awarded the UNICEF “Children and Adolescent Friendly Museum” recognition; in December 2023, the reconfirmation of the label assessed the quality and consistency of MUSE commitment to be friendly to youngsters



Gender Equality Plan (GEP)

As one among the Italian museums to early adopt the GEP, the first in Trentino region, MUSE states the commitment in promoting gender equality and non-discrimination, diversity and inclusion principles in managing the staff, as well as in the organization of workload and in the research activities.

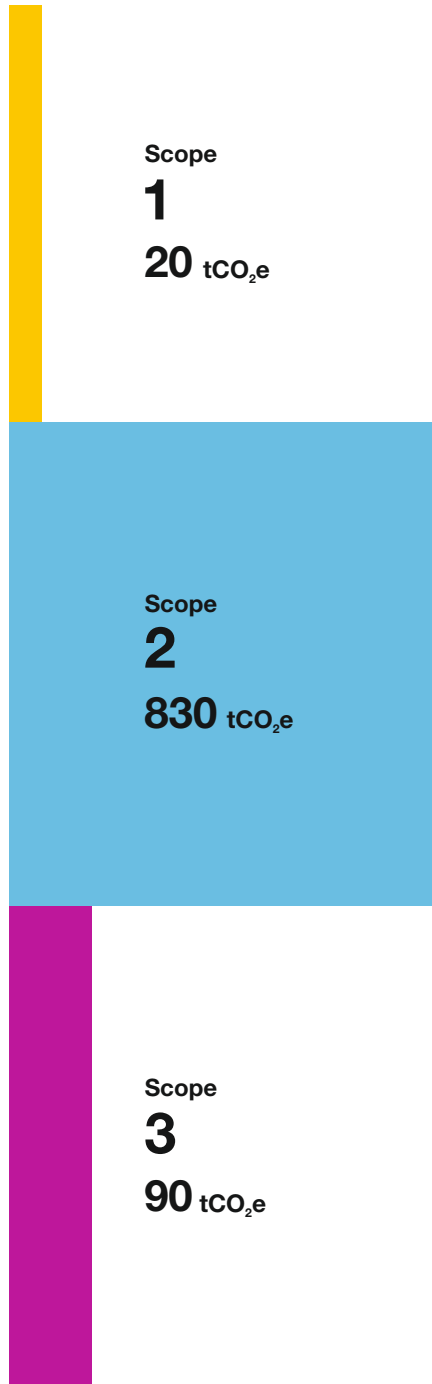


The Carbon footprint

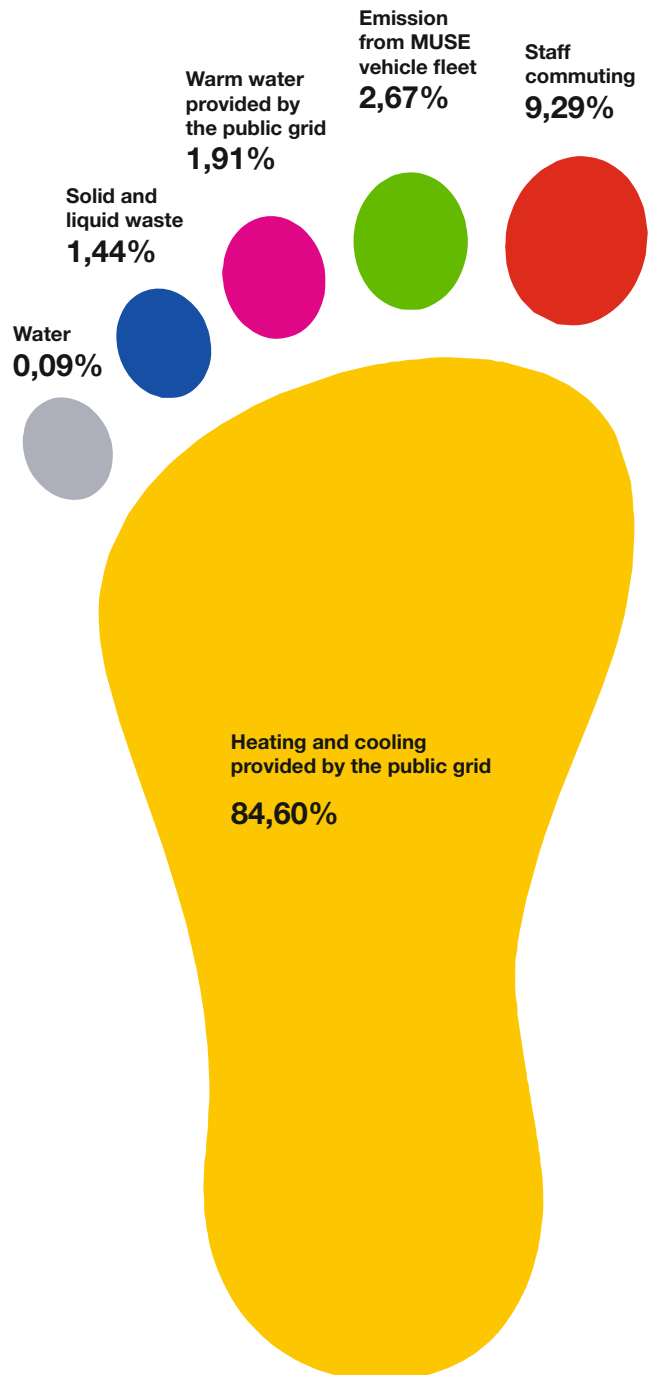
938 tCO₂e

Total emissions 2023

Distribution of Co₂e emissions according to Scopes 1, 2 and 3 (standard GJG Protocol – ISO 14064 – 1:2019)



Percentage distribution of CO₂e emission sources



wow



www.muse.it



MUSE